

elkuch[®] Flexible bent

The flexible PE-pipe



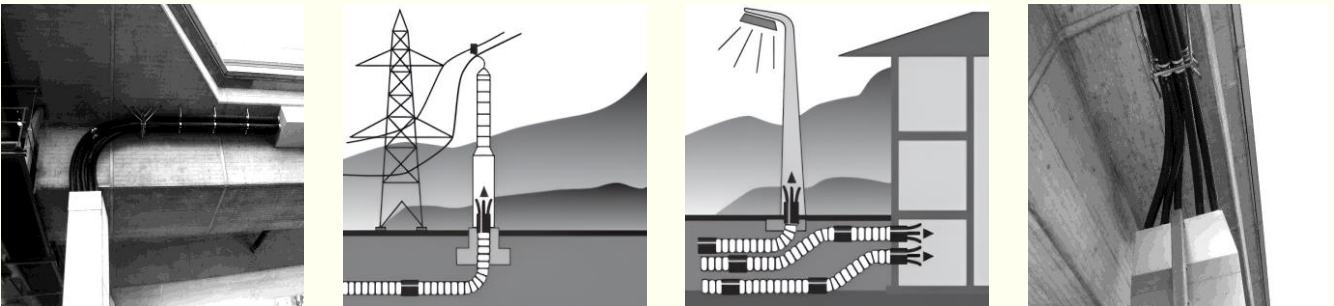
As a construction engineer or technician, you have undoubtedly experienced a similar challenging situation, during the installation of protective cable pipes, for example, an adjoining component or fittings necessary to complete the project is suddenly missing. Making matters worse, an appropriate tool is not available as a remedy, and the cement truck is impatiently waiting to release its mixture. The **elkuch® flexible bent** system offers you the ideal solution and let you regain control of your precious time. You can extend or reduce the length of the pipe precisely according to the particular on-scene requirements and merely one simple tool is needed in order to do so, a screwdriver. No time-consuming trips back into the warehouse are necessary, no waste resulting from sawing must be disposed of and no unnecessary costs are incurred. The **elkuch® flexible bent** system, distinguishes itself by virtue of its functional design, its ease of handling and its broad applicability. Experts, planners and engineers have been successfully relying upon this flexible, robust system for more than 25 years.

The unique modular assembly system



- no material loss
- segment components can be lengthened or shortened as desired
- the endless connecting system can be three-dimensional bent and curved with a choice of angle
- merely one simple tool, a screwdriver, is necessary to open the pipe

Various possibilities of application



- outer protection of electrical lines and cables
- utilization with offset bends, goosenecks, S-shapes, T-sections and other connecting options
- use as expansion joints in bridge construction

Product features

- UV-resistant
- Recyclable
- Manufactured to DIN 16876
- Resistant to fine sand and grout
- Colour: Black
- Material: PE

Accessories



Coupler

Slip on coupler

Plug in coupler

Pointed ending

Flexible bent sold by the meter

The **elkuch® flexible bent** is available as standard in 45° and 90° (single sided with coupler and smooth ending) and as a modular system by the metre. All attachments such as pointed endings and plug in coupler are available individually.